



MEE TION

Mechanical Gaming Mouse MT-M990

Driver Instructions

Contents

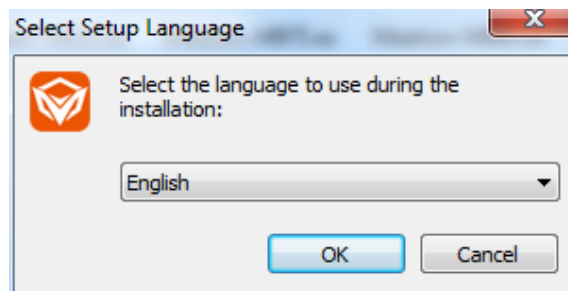
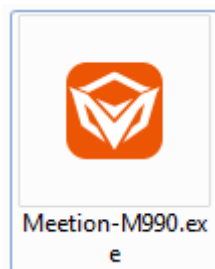
System requirements.....	- 3 -
Installation	- 3 -
Common feature settings	- 5 -
Custom function settings	- 6 -
Single key settings.....	- 6 -
Fire-function settings.....	- 8 -
Key combination functionality settings	- 9 -
Macro function settings	- 10 -
The report rate settings	- 13 -
DPI settings.....	- 13 -
System settings for mouse properties	- 14 -
Uninstall.....	- 14 -

System requirements

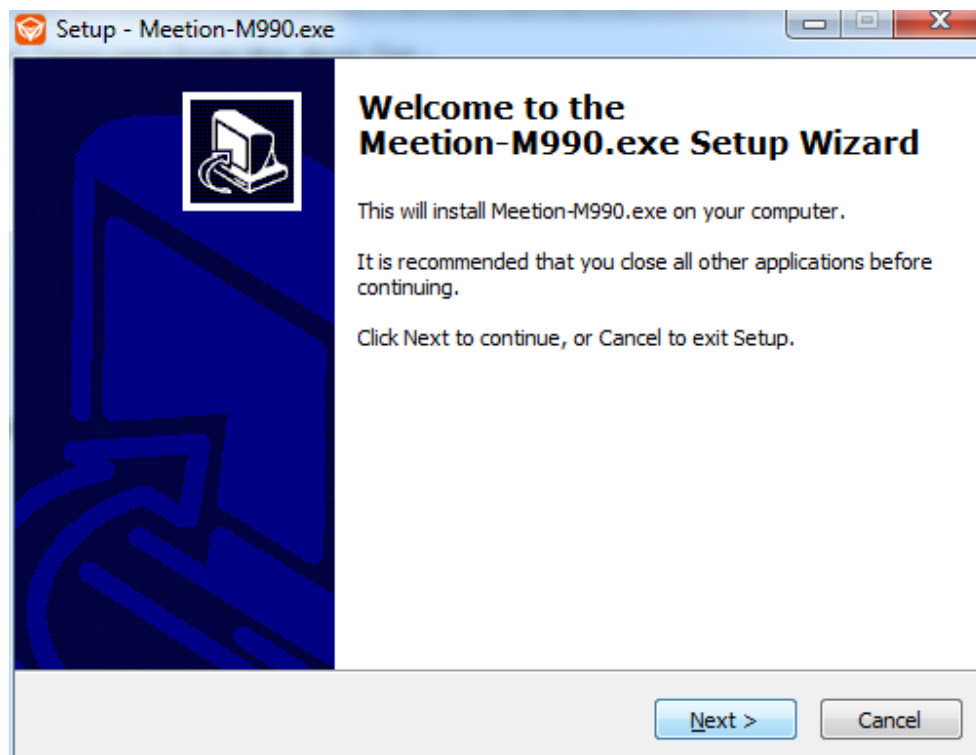
- Windows XP/ Windows Vista /Windows 7 /Windows 8
- Free USB(1.1/2.0) port
- CD-ROM Drive
- 30 MB Available hard disk space

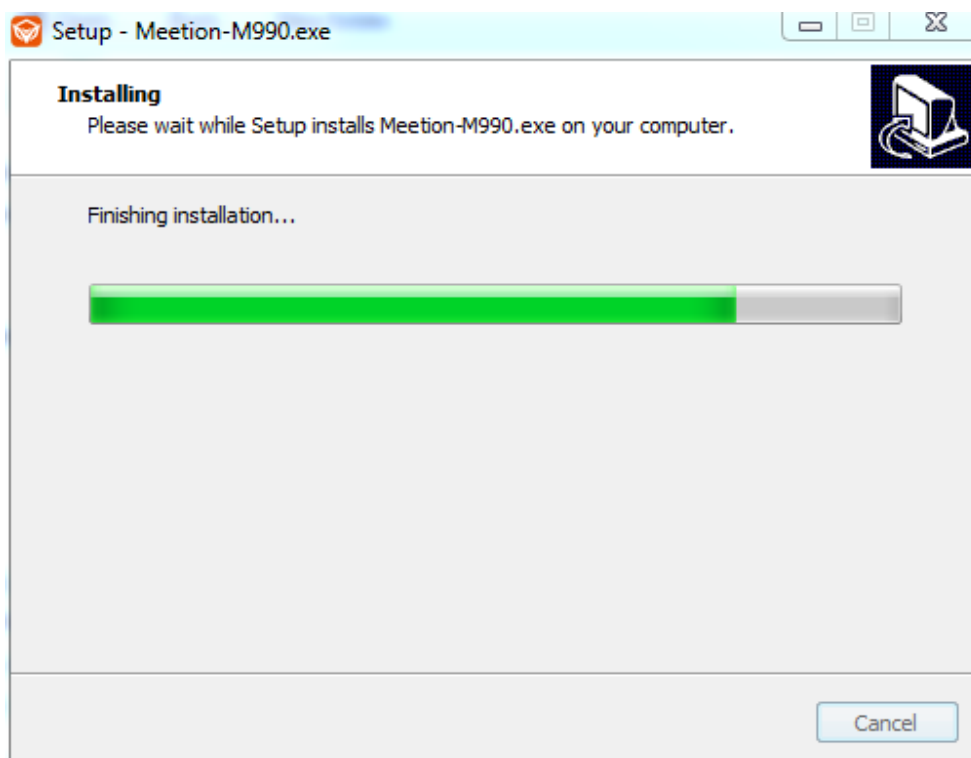
Installation

1. Firstly, make the gaming mouse connect to your computer and put the driver disk into the computer; then follow these steps to install the game driver.
2. Open the driver installation files, and then double-click the following file icon, select the installation language from the drop list.

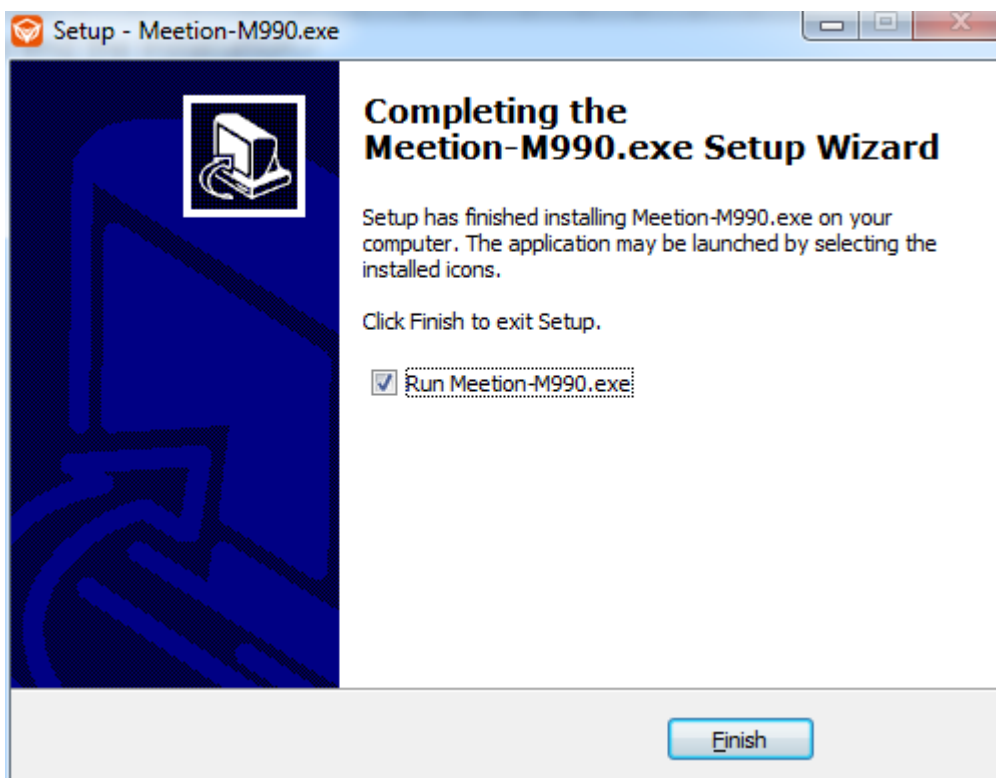


3. Click "Next"



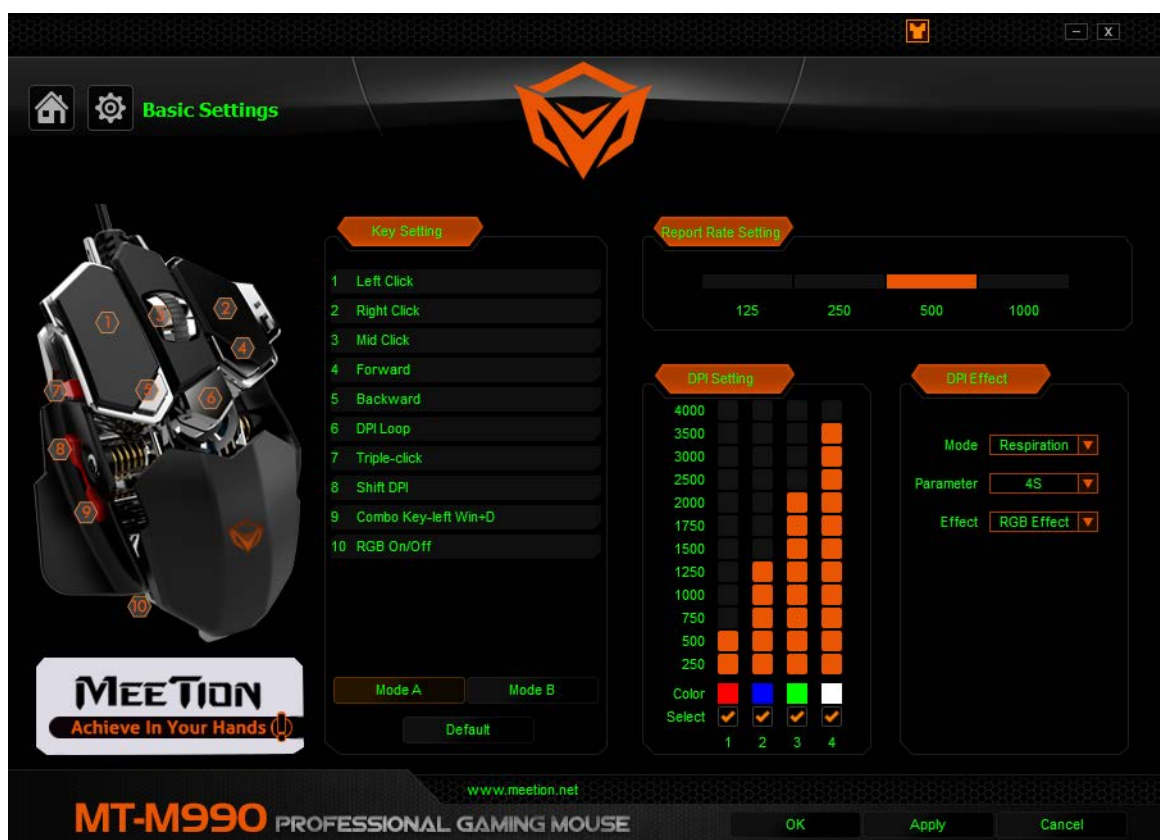
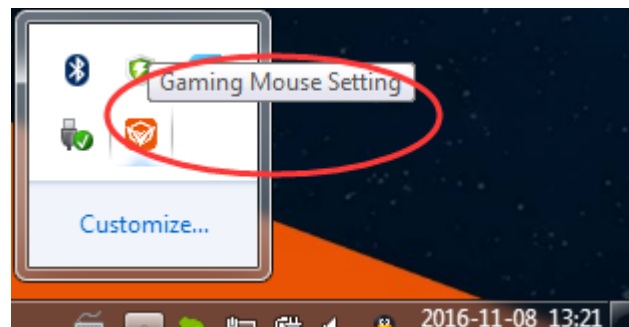


4. Select "run GamingMouse.exe" startup programs running after the installation completed, click "Finish" to end the installation.



5. After the installation is complete, you will see program icon in the system tray (see diagram red

ring). Click on the icon pop-up program settings interface.



Common feature settings

1. If you want the button 3 is Mid-click settings, first you need to click on the key 3 on the action page, and then click "Mid-click" from drop-down list.



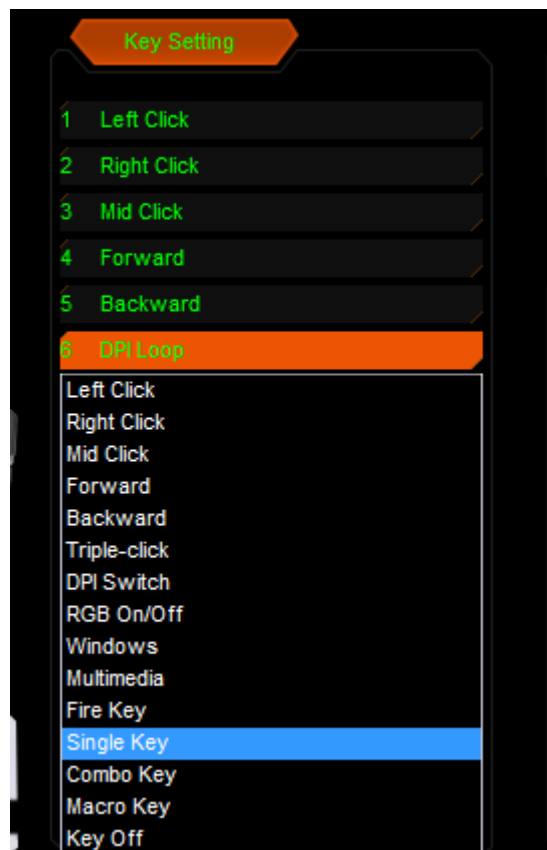
2. Button 3 of the above configuration diagrams.
3. Click "apply" to save your settings.



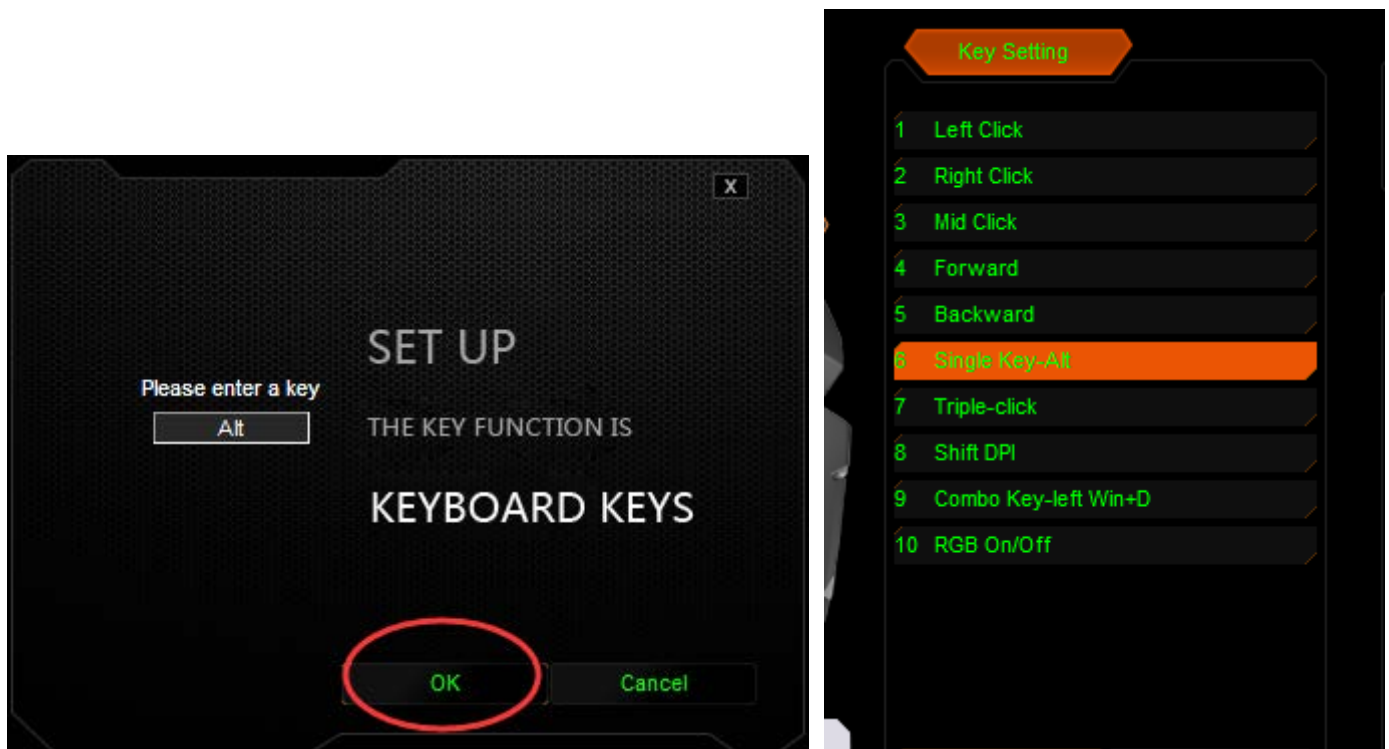
Custom function settings

Single key settings

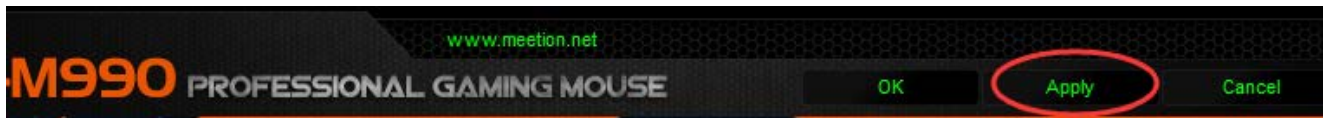
1. If you want the button 6 to Single Key settings, first you need click the key 6 on the action page, and then click the "Single Key" from drop-down list.



2. A pop-up window, as shown in the following illustration, random keystrokes from keyboard input, such as "Alt", then click "OK" to save the settings and close the dialog box.



3. Button 6 configured as above diagram.



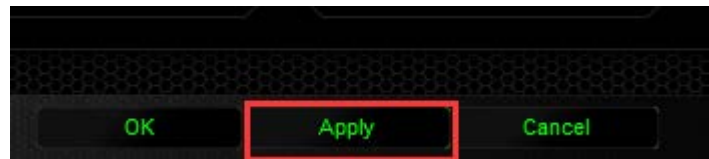
4. Click "apply" to save the settings.

Fire-function settings

1. If you want the button 9 for Fire Key settings, first you need click on the key 9 on the action page, and then click the "Fire Key" in the drop-down list.



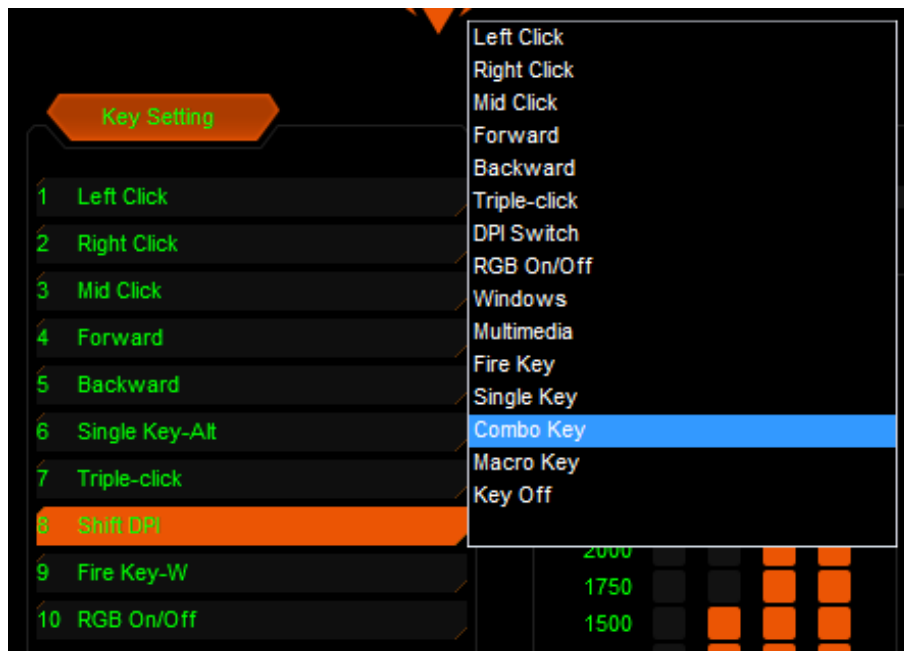
2. A pop-up window, as shown in the following figure, select the keyboard key or mouse button from the drop-down list, input speed and frequency, please refer to the above diagram illustrates the text, then click "OK" to save the settings and close the dialog box.



3. The button 9 is configured as above figure.
4. Click "apply" to save the settings.

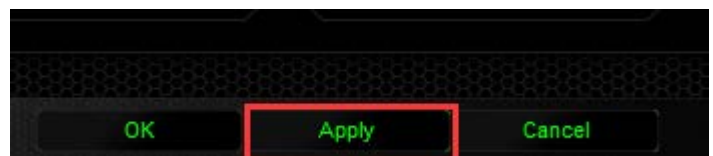
Key combination functionality settings

1. If you want button 8 key combination settings, first you need to click key 8 on the action page, and then click "Combo Key" in the drop-down list.





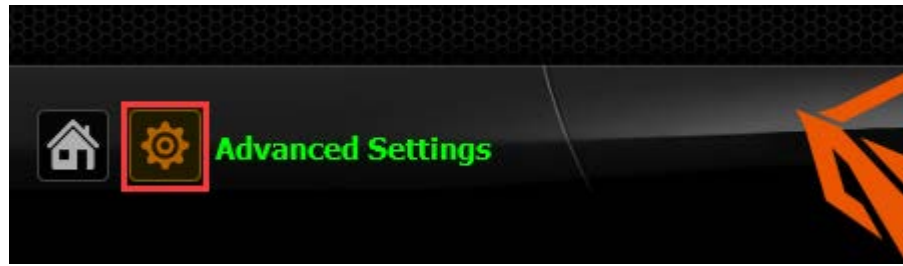
2. A pop-up window, as shown in the above figure, choose and modify button from the drop-down list, in the edit box to enter any keys from keyboard, as shown "Ctrl+A+Alt" and click "OK" to save the settings.



3. The button 8 configuration as above figure.
4. Click "apply" to save the setting

Macro function settings

1. If you want to set up button 6 macro definition, first click on the "Advanced Settings" tab

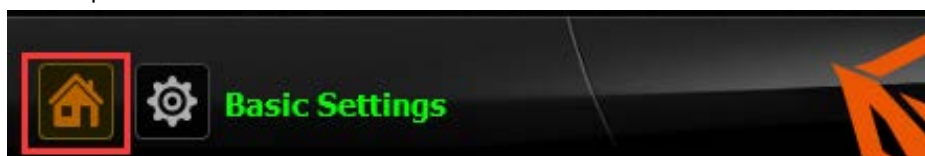


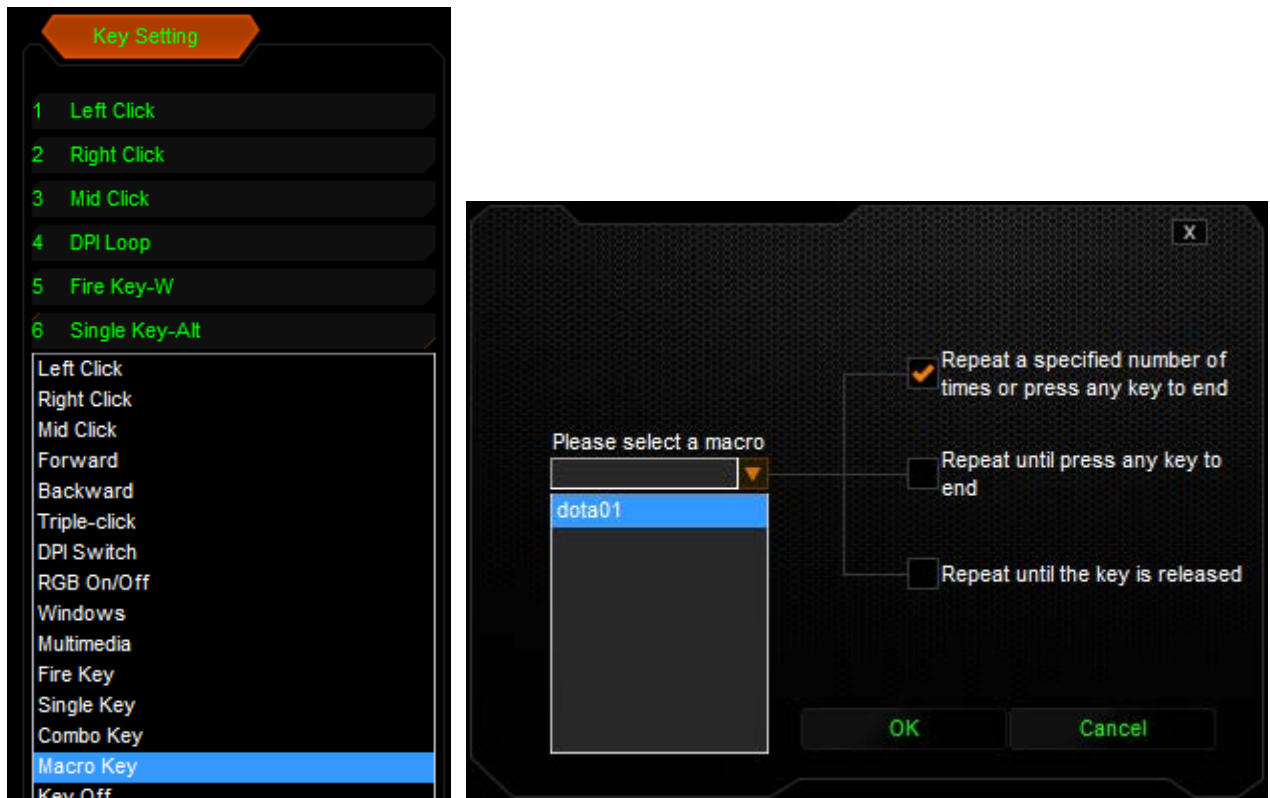
Set the macro in the "Macro Name" edit box, enter the macro name. **(Note: the Macro Name support English and Numbers only, do not full in any other language.)** For example in the figure "1", then click the "New" button then click "Start recording" button, enter a set of keys from the keyboard, just as the following figure "Shift + A + B", click "Stop recording" button to complete the recording.

In "Loop times", double click the time tab, then enter a number to cycle the number of times the macro, and click the "Confirm" button to save the settings.

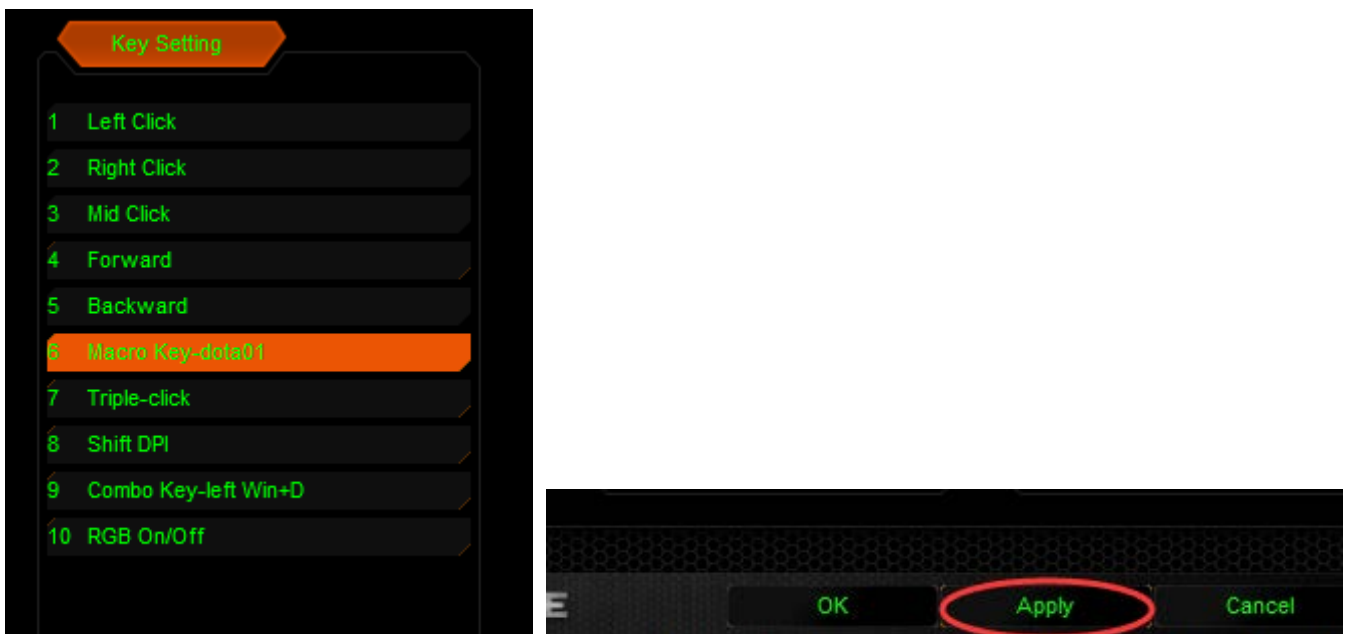


- Click on the "Basic Settings" tab, click on the key 6 on the operation of the page, and then click "Macro Key" in the drop-down list.





3. A pop-up window, as shown in the above figure, from the list box, select the macro recording is complete before, set the tick an option in the select box on the right side, and click "OK "to save the settings and close the dialog box.



4. The key 6 is configured as above figure
5. Click "apply" to save the settings.

The report rate settings

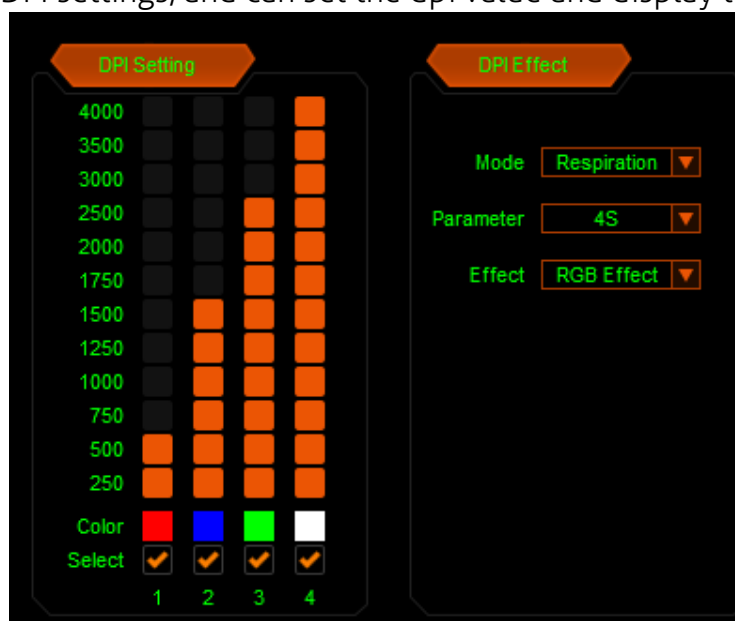
- Click on the "basic settings" tab set through the following diagram, select different reporting rates.



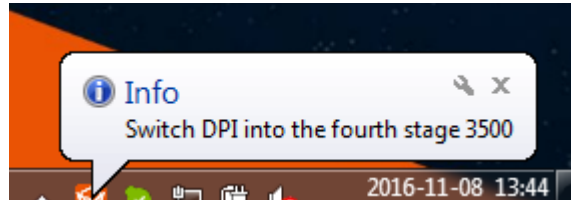
- Click "apply" to save the settings

DPI settings

- Click on the "basic settings" tab through DPI settings related to the figure below. For example, expressed support for paragraph 4 of the DPI switches in the following figure, click on the color of the color box for the DPI settings, and can set the dpi value and display the results.



2. Click "apply" to save the settings
3. Press the DPI button, the program tray icon in your system tray pop-ups window will pop-up, indicating current DPI



System settings for mouse properties

The mouse move speed, wheel speed, double click speed adjustment



Uninstall

Open Control Panel, open the "Add or remove programs" window, find the Gaming Mouse 2.0, click on the "delete", complete the program's uninstallation.

For more customer service, please email: service@meetion.net